

HI-SPEED USB 2.0 GIGABIT ETHERNET ADAPTER **USER MANUAL**

MODEL 505932



INT-505932-UM-0511-04

FCC Certifications



This Equipment has been tested and found to comply with the limits for a Class B digital device, pursuant to part 15 of the FCC Rules. These limits are designed to provide reasonable protection against harmful interference when the equipment is operated in a commercial environment. This equipment generates, uses, and can radiate radio frequency energy and, if not installed and used in accordance with the instruction manual, may cause harmful interference to radio communications.

Operation of this equipment in a residential area is likely to cause harmful interference in which case the user will be required to correct the interference at his own expense.

This device complies with Part 15 of the FCC Rules. Operation is subject to the following two conditions: (1) this device may not cause harmful interference, and (2) this device must accept any interference received; including interference that may cause undesired operation.

CE Warning



This equipment complies with the requirements relating to electromagnetic compatibility, EN 55022 class B for ITE, the essential protection requirement of Council Directive 2004/108/EC on the approximation of the laws of the Member States relating to electromagnetic compatibility.

Company has an on-going policy of upgrading its products and it may be possible that information in this document is not up-to-date. Please check with your local distributors for the latest information. No part of this document can be copied or reproduced in any form without written consent from the company.

Trademarks:

All trade names and trademarks are the properties of their respective companies.

Copyright © 2010, All Rights Reserved.

1. Unpacking Information

Thank you for purchasing the USB to Gigabit Ethernet adapter. Before you start, please verify that your package contains the following items:

1. One USB to Gigabit Ethernet Adapter.
2. One driver & manual CD

2. Overview

2.1 Introduction

This USB to Gigabit Ethernet adapter is a cost-effective solution that converts a USB port into a 10/100/1000 Base-T Ethernet port. It enables a low-cost and affordable Gigabit Ethernet network connection to desktop and notebook PCs and embedded systems using popular USB ports: no need to purchase an expensive Gigabit network interface card or use a PCI or Card bus slot — just plug into an available USB port on a desktop or laptop PC running Windows 7/2003/XP/Vista or Linux/Mac.

Installation and operation are further simplified by living up to USB's Plug and Play installation approach to connecting computer peripherals. You will not need to open the case of your computer, nor will you be required to set IRQs. It also supports full and half duplex mode to achieve the best speeds for each attached device, and hot-swap capability provides the simplest way to connect your computer to an Ethernet-based network.

2.2 Key Features

- Complies with IEEE 802.3 10BASE-T standard
- Complies with IEEE 802.3u 100BASE-TX standard
- Complies with IEEE 802.3ab 1000BASE-T standard
- Compliant with USB 1.1 and 2.0 standards
- Complies with IEEE 802.3x Flow Control
- Supports full/half duplex operation
- Plug and Play Installation
- Support hot inserting and swapping
- Automatically negotiates 10/100/1000 Mbps connection rate
- Support drivers for Windows 7/2003/XP/ Vista/Linux/Mac
- FCC, CE Class B

2.3 LED Definition

Power

Green: Power is on
Off: Power is off

10/100M Link/ACT

Green: Valid link on this port
Blinking: Data transferring/ receiving on this port
Off: No Valid Link on this port or the port is connected at 1000 Mbps

1000M Link/ACT

Green: Valid link on this port
Blinking: Data transferring/ receiving on this port
Off: No Valid Link on this port or the port is connected at 10/100 Mbps

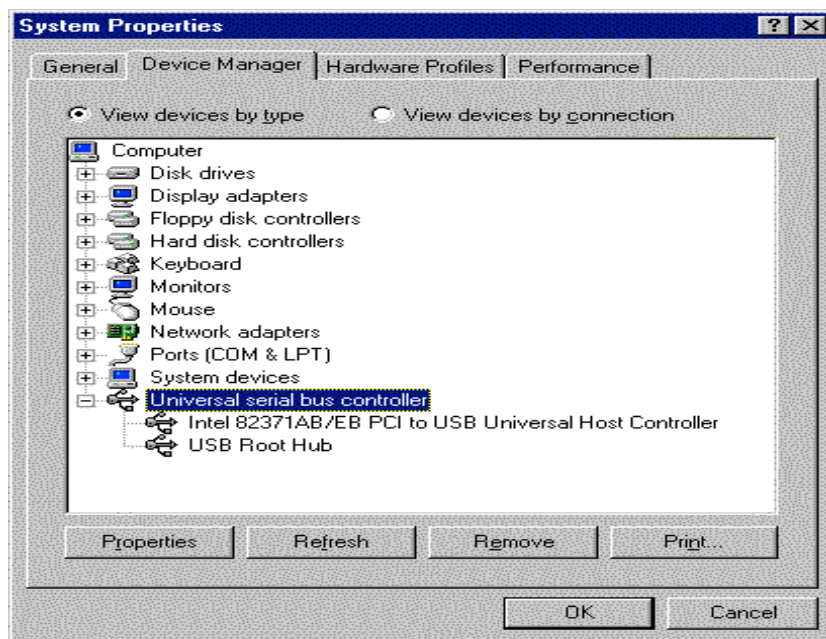
3. Installing the USB to Gigabit Ethernet Adapter

3.1 System Requirements

- Pentium 166 MMX or above processor-based PC
- Available USB port
- Microsoft Windows 7/2003/XP/Vista or Linux or Mac
- CD-ROM Drive

3.2 Hardware Installation

Before installation, check if there is an available active USB port. To check this, go to **My Computer > Control Panel > System**, then click the **Device Manager** tab to check if the **Universal Serial Bus controller** is displayed, as shown below.



3.2.1 Connect the Adapter to your PC

1. Plug the USB adapter into your PC.
2. Windows will detect the new hardware automatically and prompt you for the driver. For driver installation, refer to the chapter "Software Installation."

3.3 Software Installation

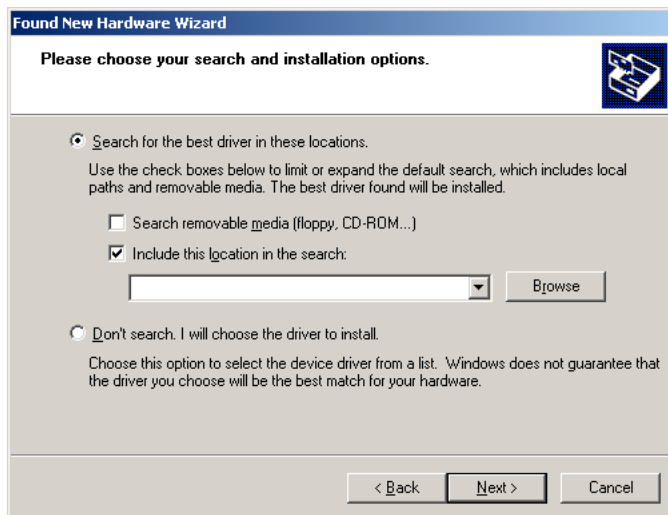
After attaching the USB to Gigabit Ethernet adapter to your PC or laptop, the auto-detection for new hardware will be activated automatically. The procedures to perform driver installation differ slightly from each operation system: Refer to the following sections.

3.3.1 Windows XP Setup

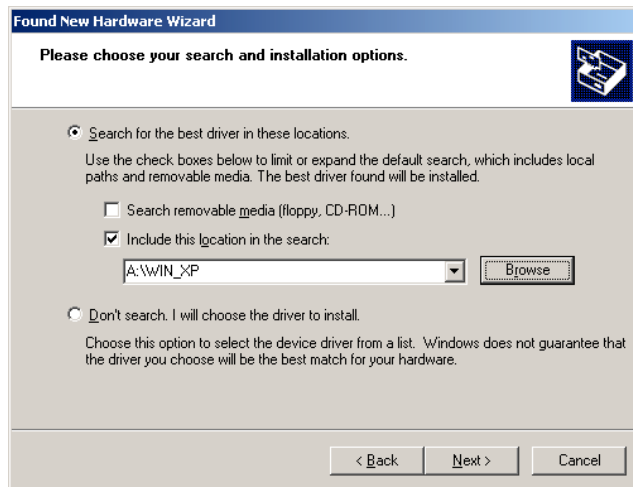
1. Select "Install from a list or specific location," then click next.



2. Insert the provided driver CD. Select "Include this location in the search," then click "Browse."



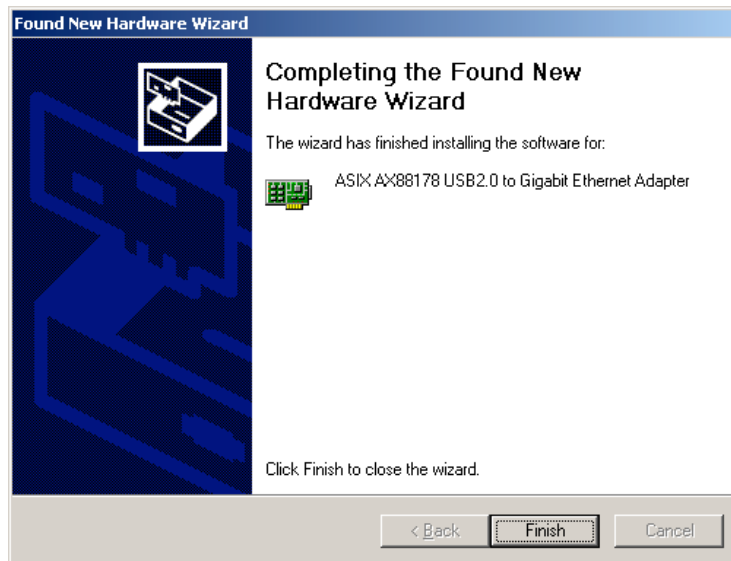
3. Choose the location of your CD-ROM. Locate the setup.exe file in the folder "D:505932_USB_Gigabit_Ethernet_Adapter\WinXP," where "D" is the designation of your CD drive. Click "Next" to proceed.



4. A caution window may pop up. Click "Continue Anyway." There won't be any effect on the performance of the adapter.

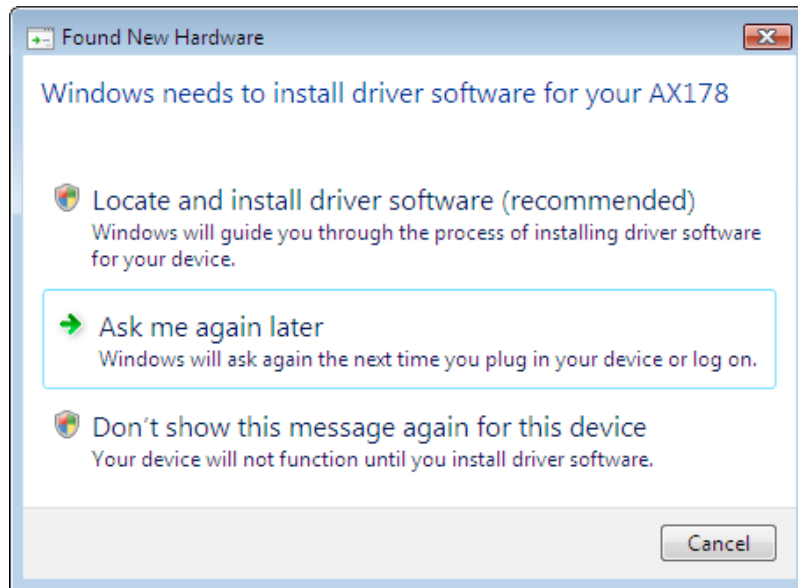


5. Click "Finish" to complete the installation and activate the adapter.



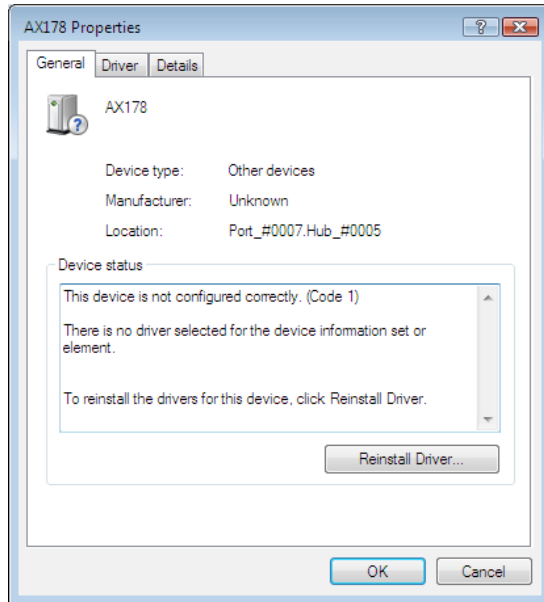
3.3.2 Windows Vista setup

1. When the Found New Hardware box appears, close this window.

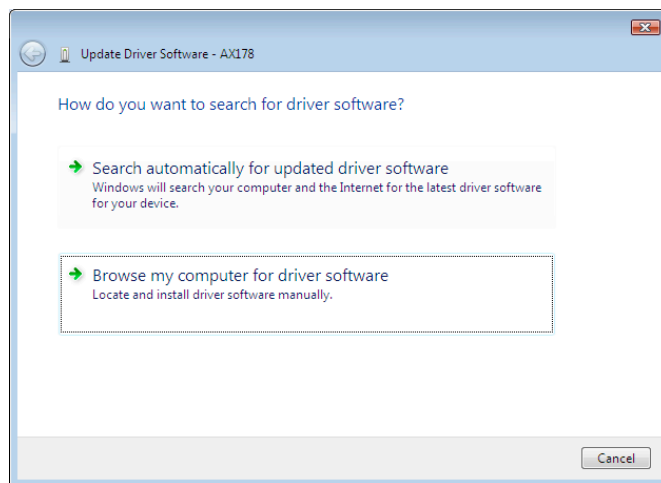


2. Go to Start → Control Panel → Hardware and Sound → Device Manager.
3. Double-click the "AX178" icon.

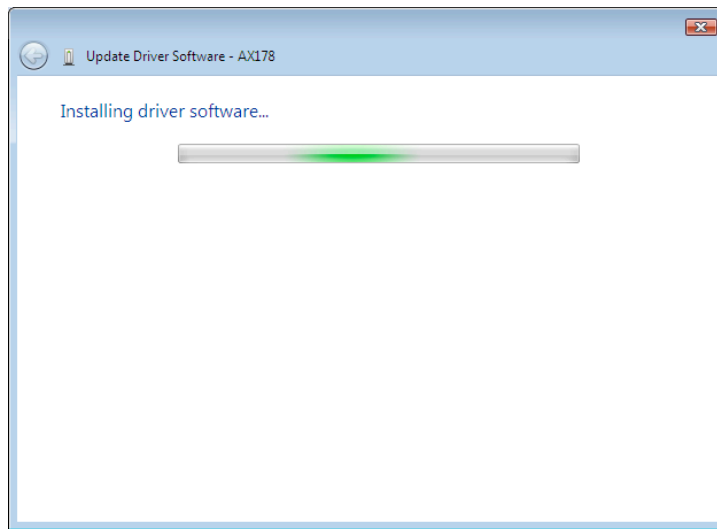
4. Click the "Reinstall Driver" button.



5. Select "Browse my computer for driver software."



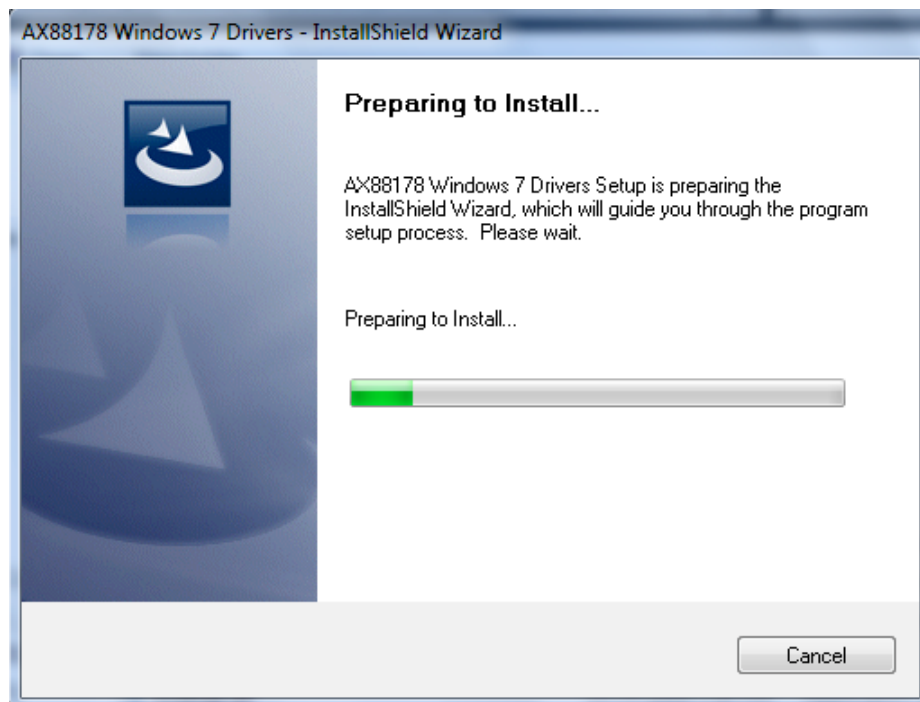
6. Click the "Browse" button and select Computer → your CD-ROM drive → "D:505932_USB_Gigabit_Ethernet_Adapter\Vista," where "D" is the designation of your CD drive. Click "OK" to proceed.
7. Click "Next" to begin the installation.
8. Wait a few moments while it installs the driver.



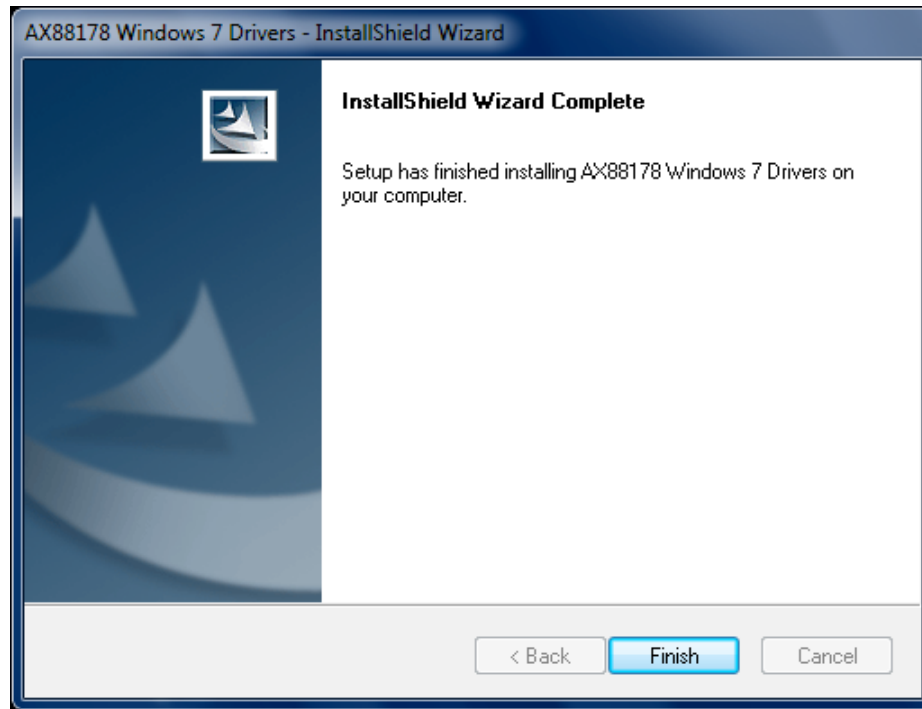
9. Click the "Close" button to finish the installation.

3.3.3 Windows 7 Setup

1. Locate the setup.exe file on the included setup CD in the folder "D:505932_USB_Gigabit_Ethernet_Adapter\Win7," where "D" is the designation of your CD drive. Double-click the setup icon to begin the installation, then follow the on-screen instructions. When the "Preparing to Install" screen displays, wait a few moments while the installation continues.

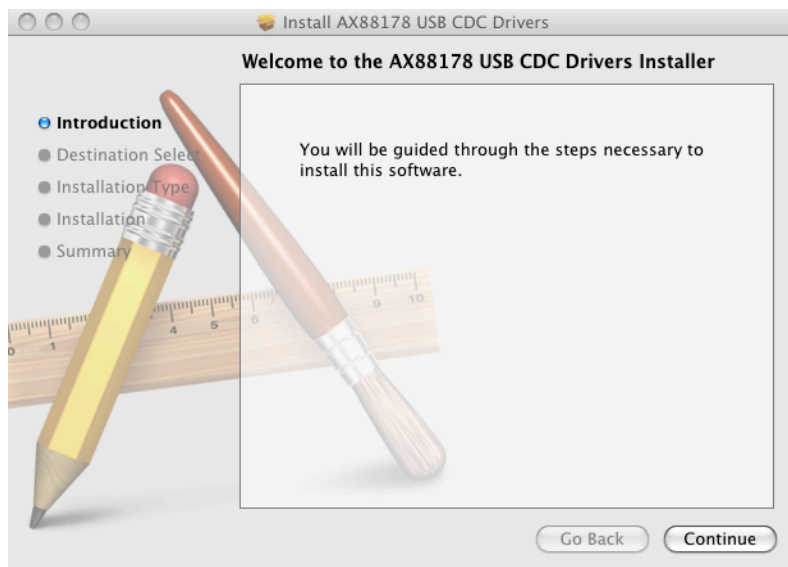


2. After the installation is complete, click the "Finish" button.

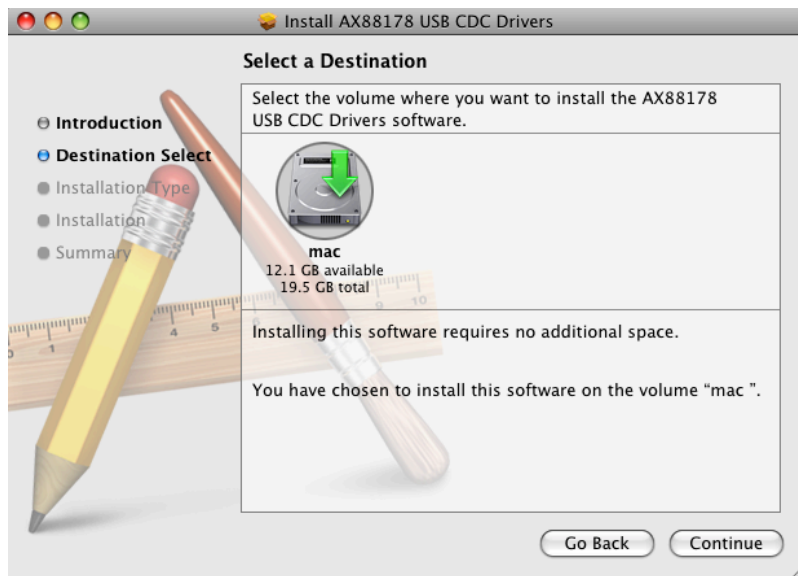


3.3.4 MAC OS Setup

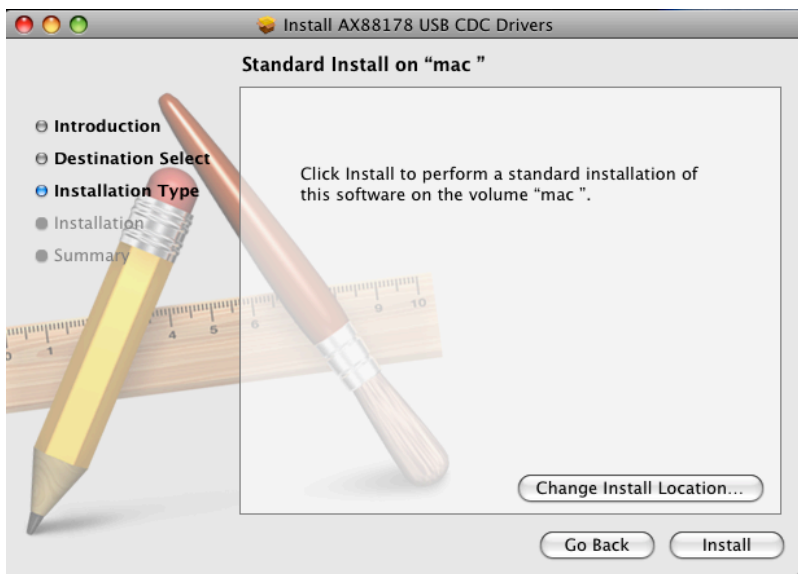
1. Insert the CD driver into the CD-ROM drive. Go to Computer > CD ROM > "505932_ USB_ Gigabit_Ethernet_Adapter" > Mac.
2. Double-click and run the installation package.
3. When the Welcome screen displays, click "Continue."



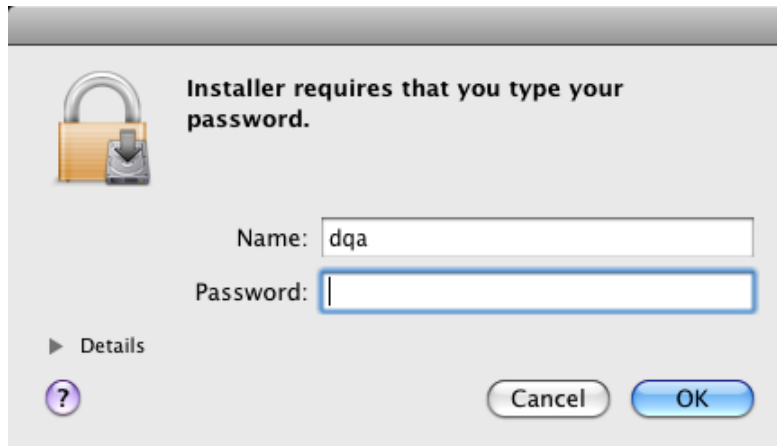
4. When the Select a Destination interface displays, select an install location and click "Continue."



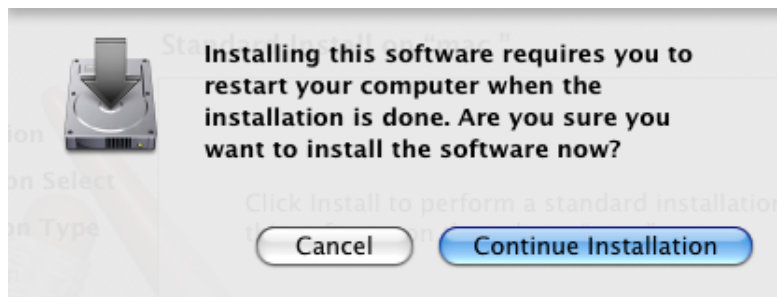
5. Click "Go Back" to change the install location or click "Install" and continue.



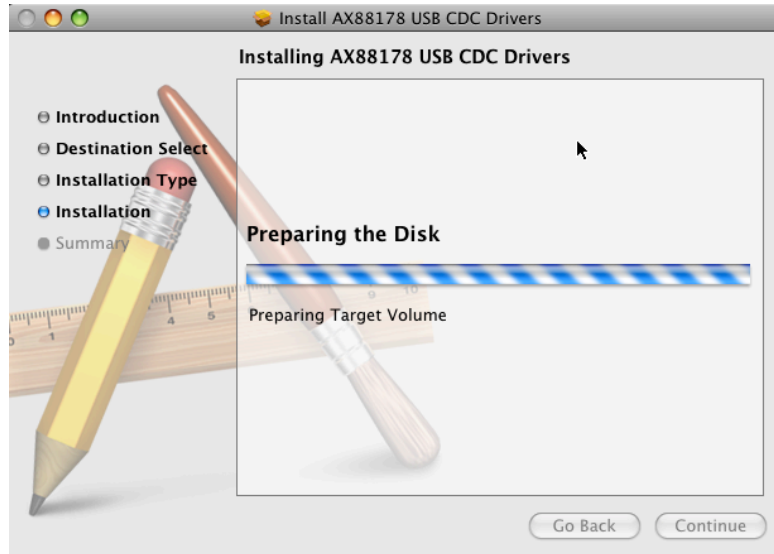
6. If prompted, enter your User Name and Password and click "OK."



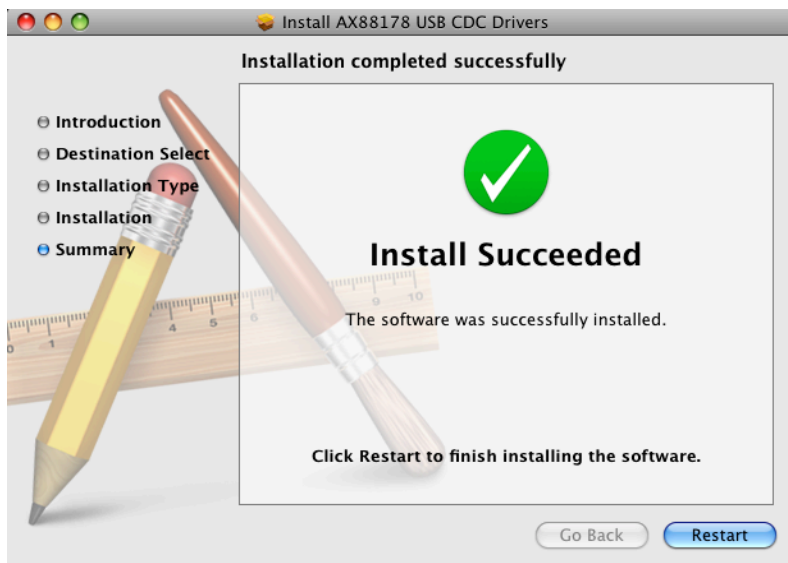
7. Click "Continue Installation."



8. Wait a few moments for the installation.



9. After the driver is successfully installed, click "Restart" and the computer will reboot automatically.



4. Product Specifications

Standards	IEEE802.3, 10BASE-T IEEE802.3u, 100BASE-TX IEEE802.3ab, 1000BASE-T IEEE802.3x Flow control USB 1.1/ 2.0
Interface	1*10/100/1000 Mbps RJ-45 port 1*USB type A male connector
Cable Connections	UTP Category 3,4,5,5e
Network Data Rate	1000Mbps, 100Mbps, 10Mbps
Jumbo Frame	9k bytes
LED indications	1* 1000M Link/ACT 1* 10/100M Link/ACT 1* Power
Max Power Consumption	1.41W
Temperature	Operating: 0°C ~ 40°C (32°~104°F) Storage: -20°C ~ 70°C (-4°~158°F)
Humidity	Operating: 10% ~ 90% RH, non-condensing Storage: 5%~90% RH, non-condensing
Operation System	Windows 7/2003/XP/Vista; Mac
Emission	FCC, CE Class B
Weight	63g